



Test Report

No.: GZ0908076031/CHEM

Date: AUG 21, 2009

Page 1 of 4

TETRO LTD
NO.79 LI JIA FANG RD, LI JIA FANG INDUSTRIAL DISTRICT, SHIPAI TOWN, DONGGUAN GUANGDONG CHINA

The following sample(s) was/were submitted and identified on behalf of the client as Mesh/Coating in the AI bar

SGS Job No. : GZHGR2009022548
 Tested sample information : Not applicable
 Client Reference Information : Style / Item No: Tet809/Mesh+Coating (in the AI bar)
 P.O. / Ref No: Sample
 Buyer : BABY SAFE
 Manufacturer : TETRO LTD
 Country of Destination : USA
 Sample Receiving Date : AUG 14, 2009
 Testing Period : AUG 14, 2009 TO AUG 21, 2009

Test Requested : As specified by client, selected parts of the specified submitted sample(s) for compliance with Public Law 110-314 (Consumer Product Safety Improvement Act of 2008, CPSIA):-
 1) Lead in paint / similar surface coating material
 2) Lead in accessible substrate materials
 3) Phthalates

Methods and Results : Please refer to next page(s).

Result Summary :

Item	Test Parameter	Conclusion
1	CPSIA section 101(f) - Lead in paint/similar surface coating material	PASS
2	CPSIA section 101(a)(2) - Lead in accessible substrate materials	PASS
3	CPSIA section 108 - Phthalates	PASS

Signed for and on behalf of
SGS-CSTC Ltd.

Sunny Huang
Lab Sr. Supervisor

This document is issued by the Company under its General Conditions of Service printed overleaf or available on request and accessible at http://www.sgs.com/terms_and_conditions.htm. Attention is drawn to the limitation of liability, indemnification and jurisdiction issues defined therein. Any holder of this document is advised that information contained hereon reflects the Company's findings at the time of its intervention only and within the limits of Client's instructions, if any. The Company's sole responsibility is to its Client and this document does not generate parties to a transaction from exercising all their rights and obligations under the transaction documents. Any unauthorized alteration, forgery or falsification of the content or appearance of this document is unlawful and offenders may be prosecuted to the fullest extent of the law.
 Unless otherwise stated, the results shown in this test report refer only to the sample(s) tested. This document cannot be reproduced except in full, without prior approval of the Company.



SGS - Standards Technical Services Co., Ltd. 198 Kazhu Road, Sointech Park, Guangzhou Economic & Technology Development District, Guangzhou, China 510663 | (86-20) 82155555 | (86-20) 82075125 | www.cn.sgs.com
 中国·广州·经济技术开发区科学城科珠路198号 邮编: 510663 | (86-20) 82155555 | (86-20) 82075125 | e sgs.china@sgs.com

Member of the SGS Group (SGS SA)

Test Results :

1) Lead in paint/similar surface coating material

Method: CPSC Test Method: CPSC-CH-E1003-09 'Standard Operation Procedure for Determining Total Lead (Pb) in paint and other similar surface coating' (ASTM E1645-01 (2007) and E1613-04).

Test item	No.1	Permissible Limit
Lead (Pb)	ND	0.009 %
Comment	PASS	---

- Note:
1. % = percentage by weight
 2. 1% = 10000ppm (mg/kg)
 3. ND = not detected
 4. Method Detection Limit = 0.0020 %

2) Lead in accessible substrate materials

Method (non-metallic materials): CPSC Test Method: CPSC-CH-E1002-08 'Standard Operation Procedure for Determining Total Lead (Pb) in Non-Metal Children Product' (EPA 3052: 1996)

Test item	No.2	Permissible Limit**
Lead (Pb)	ND	0.03 %
Comment	PASS	---

** The requirements for lead in substrate in children's products is summarized below

Scope	Requirement	Effective date
Lead in accessible substrate	≤ 0.03 %	14 August 2009
	≤ 0.01%	14 August 2011

- Note :
1. % = percentage by weight
 2. 1% = 10000ppm (mg/kg)
 3. ND = not detected
 4. Method Detection Limit = 0.0020 %

This document is issued by the Company under its General Conditions of Service printed overleaf or available on request and accessible at http://www.sgs.com/terms_and_conditions.htm. Attention is drawn to the limitation of liability, indemnification and jurisdiction issues defined therein. Any holder of this document is advised that information contained hereon reflects the Company's findings at the time of its intervention only and within the limits of Client's instructions, if any. The Company's sole responsibility is to its Client and this document does not generate parties to a transaction from exercising all their rights and obligations under the transaction documents. Any unauthorized alteration, forgery or falsification of the content or appearance of this document is unlawful and offenders may be prosecuted to the fullest extent of the law. Unless otherwise stated, the results shown in this test report refer only to the sample(s) tested. This document cannot be reproduced except in full, without prior approval of the Company.



3) Phthalates

Method: With reference to ASTM D3421-75. Analysis was performed by Gas Chromatography / Mass Spectrometry.

Concentration of phthalates in components

Test item	<u>No.1</u>	<u>No.2</u>	<u>Permissible Limit</u>
Dibutyl Phthalate (DBP)	ND	ND	0.1%
Benzylbutyl Phthalate (BBP)	ND	ND	0.1%
Bis-(2-ethylhexyl) Phthalate (DEHP)	ND	ND	0.1%
Diisononyl Phthalate (DINP)	ND	ND	0.1%
Di-n-octyl Phthalate (DNOP)	ND	ND	0.1%
Diisodecyl Phthalate (DIDP)	ND	ND	0.1%
Comment	PASS	PASS	---

- Note :
1. % = percentage by weight
 2. 1% = 10000ppm (mg/kg)
 3. ND = not detected
 4. Method Detection Limit for each of DBP, BBP, DEHP and DNOP = 0.003 %
 5. Method Detection Limit for each of DINP and DIDP = 0.01 %

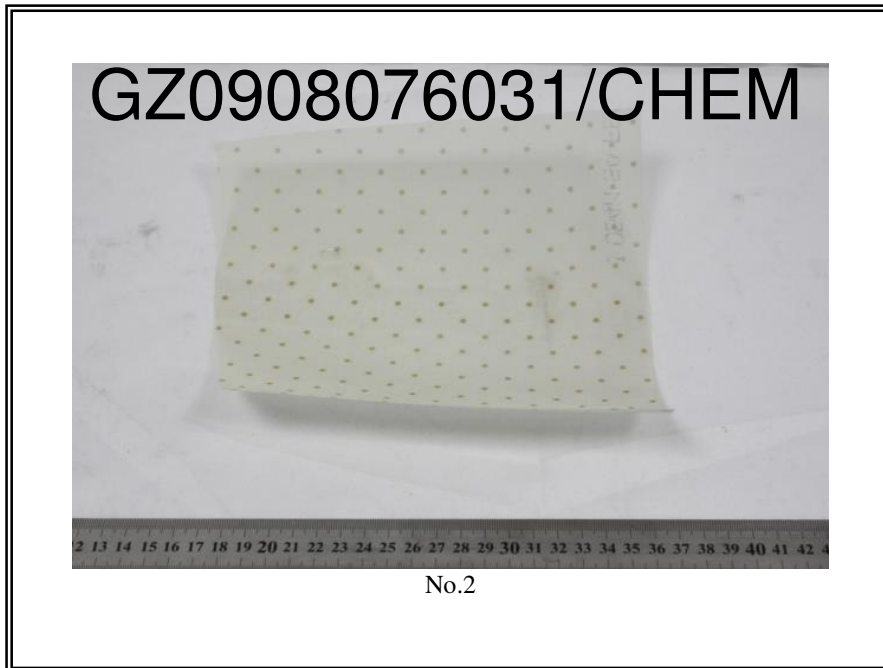
Sample Description :

- No.1 Yellow coating on metal
- No.2 Beige mesh sheet w/ lt-brown dot

This document is issued by the Company under its General Conditions of Service printed overleaf or available on request and accessible at http://www.sgs.com/terms_and_conditions.htm. Attention is drawn to the limitation of liability, indemnification and jurisdiction issues defined therein. Any holder of this document is advised that information contained hereon reflects the Company's findings at the time of its intervention only and within the limits of Client's instructions, if any. The Company's sole responsibility is to its Client and this document does not generate parties to a transaction from exercising all their rights and obligations under the transaction documents. Any unauthorized alteration, forgery or falsification of the content or appearance of this document is unlawful and offenders may be prosecuted to the fullest extent of the law. Unless otherwise stated, the results shown in this test report refer only to the sample(s) tested. This document cannot be reproduced except in full, without prior approval of the Company.



Sample photo :



SGS authenticate the photo on original report only

*** End of Report ***

This document is issued by the Company under its General Conditions of Service printed overleaf or available on request and accessible at http://www.sgs.com/terms_and_conditions.htm. Attention is drawn to the limitation of liability, indemnification and jurisdiction issues defined therein. Any holder of this document is advised that information contained hereon reflects the Company's findings at the time of its intervention only and within the limits of Client's instructions, if any. The Company's sole responsibility is to its Client and this document does not generate parties to a transaction from exercising all their rights and obligations under the transaction documents. Any unauthorized alteration, forgery or falsification of the content or appearance of this document is unlawful and offenders may be prosecuted to the fullest extent of the law.

Unless otherwise stated, the results shown in this test report refer only to the sample(s) tested. This document cannot be reproduced except in full, without prior approval of the Company.

